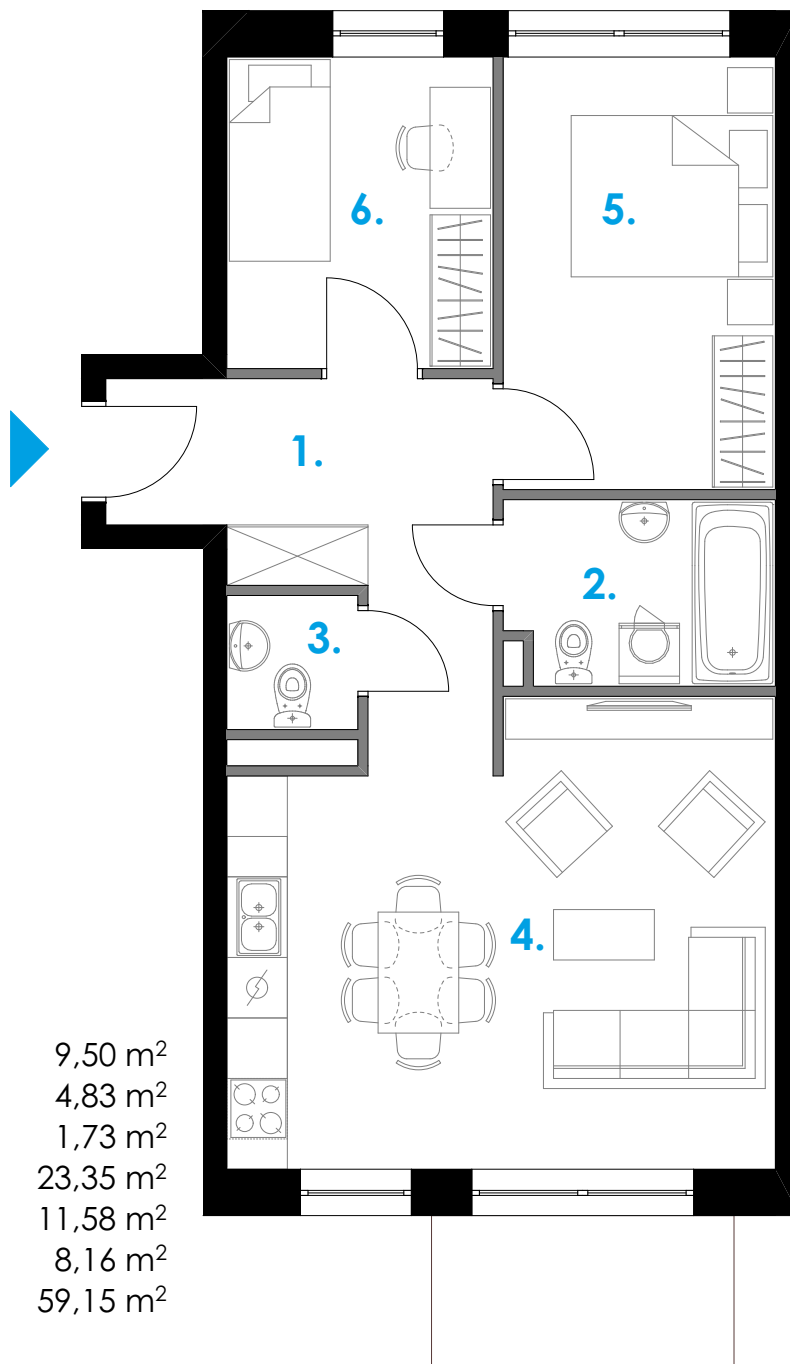
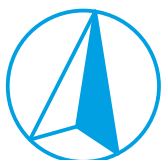




# WYSOKA 30

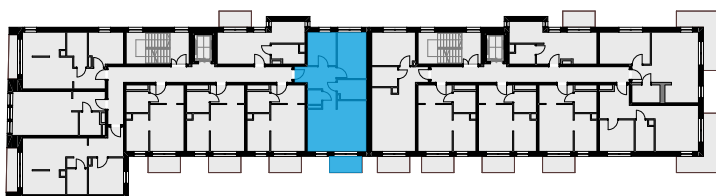


## ZESTAWIENIE POWIERZCHNI:

1. HOL	9,50 m <sup>2</sup>
2. ŁAZIENKA	4,83 m <sup>2</sup>
3. WC	1,73 m <sup>2</sup>
4. SALON Z ANEKSEM KUCHENNYM	23,35 m <sup>2</sup>
5. POKÓJ	11,58 m <sup>2</sup>
6. POKÓJ	8,16 m <sup>2</sup>
SUMA:	59,15 m <sup>2</sup>

BALKON 4,50 m<sup>2</sup>

RZUT MIESZKANIA  
SKALA: 1:75



**MIESZKANIE NR 21.  
PIĘTRO 3.**